

Nobeltec

Raster Plus Pack™

Raster Plus Pack – Your Comfort Zone

Raster Plus Pack allows you to upgrade to Admiral MAX Pro and VNS MAX Pro while keeping many of the same features you've come to rely on in previous versions of Nobeltec Navigation Software. These features include support for Maptech/BSB data (version 2-5), NOSGeo data, Maptech perspective photos and other Nav data formats. In short, you'll stay in your comfort zone with Raster Plus Pack while taking advantage of the new features in Admiral MAX Pro or VNS MAX Pro. What could be better?



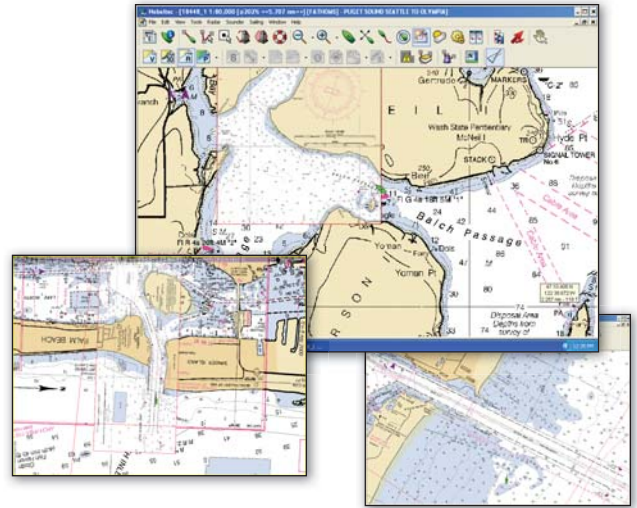
- ~ Maptech/BSB data (versions 2-5)
- ~ NOSGeo data
- ~ Maptech perspective photos

 **JEPPESEN**
Marine

Jeppesen is a Boeing Company

nobeltec.com

Raster Plus Pack™



Raster Plus Pack is sold separately and requires the purchase of Admiral MAX Pro or VNS MAX Pro. It contains the following features:

Support for Maptech/BSB Data Format (Version 2-5)

Use many of the same raster charts you've come to know and rely on in previous versions of Admiral and VNS. Use the 3D overlay feature on these raster charts. Open rasters and photos in NavView (Admiral Only).

NOSGeo Data Format

Use NOSGeo charts in both PlanView and NavView (NavView for Admiral Only).

Maptech Perspective Photos and Extra Nav Data Formats

Enjoy Maptech photos in both the Planview and NavView

Minimum System Requirements*

- Windows® XP Home/Professional or Vista™ †
- CPU: 1 GHz (Dual Core/ Dual Processor is supported)
- Memory: 1 GB RAM
- Hard Drive Space: 500 MB for NNS programs, plus 20 GB for charts and supplemental data
- Display: 1024x768 resolution, 32-bit color video
- Video Card: 64 MB RAM
- DVD Drive
- Serial or USB ports for GPS, radar, etc.
- USB port: At least one USB port for Hardware Key
- Mouse or other pointing device

Recommended System Requirements*

- CPU: 2 GHz
- Memory: 2 GB RAM
- Video Card: 256 MB RAM & OpenGL for each monitor
- Internet access for registration and to purchase software add-ons and charts

* Higher system requirements may be appropriate if multiple advanced features are used concurrently.

† Latest Service Pack may be required for Technical Support troubleshooting

CONTACT US

Sales, Customer Service & Technical Support: For sales or product information, please contact us at:

North & South America

Support: (8am – 9pm ET)
Toll-Free: (800) 732-2800
Global: +1 303 328 6983
Email: marine.support@jeppesen.com
Sales: (11am – 8pm ET)
Toll-Free: (800) 946-2877
Fax: +1 503 579 5095
Email: sales@jeppesen.com

Europe, Middle East, Africa

Support: (8am – 5pm CET)
Global: +49 6102 50 8171
Email: marine.support@jeppesen.com
Sales: (8am – 5pm CET)
Tel: +44 1293 842674
Fax: +1 503 579 5095
Email: sales@jeppesen.com

Asia, Pacific, Australia

Support: (8am – 5:30 pm AET)
Global: +61 2 9808 6200
Email: cmapinfo@c-map.com.au
Sales: (8:30am – 5:30pm AET)
Global: +61 2 9808 6200
Fax: +61 2 9808 6233
Email: sales@jeppesen.com

Visit Our Website: www.nobeltec.com

Jeppesen Marine is continuously enhancing product specifications and accessories. To find the most up-to-date information, please visit our website. Specifications subject to change without notice. Trademarks are property of their respective owners.
©2008 Jeppesen Marine, Inc. All rights reserved.